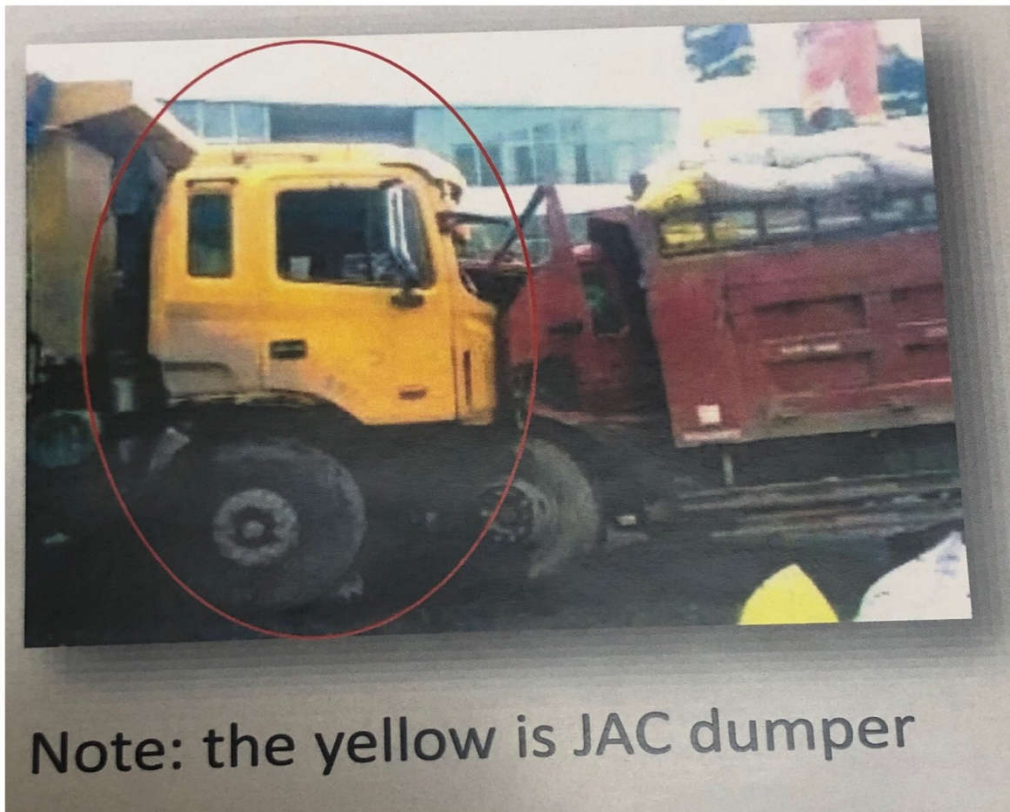


PASSIVE SAFETY DESIGN – CABIN

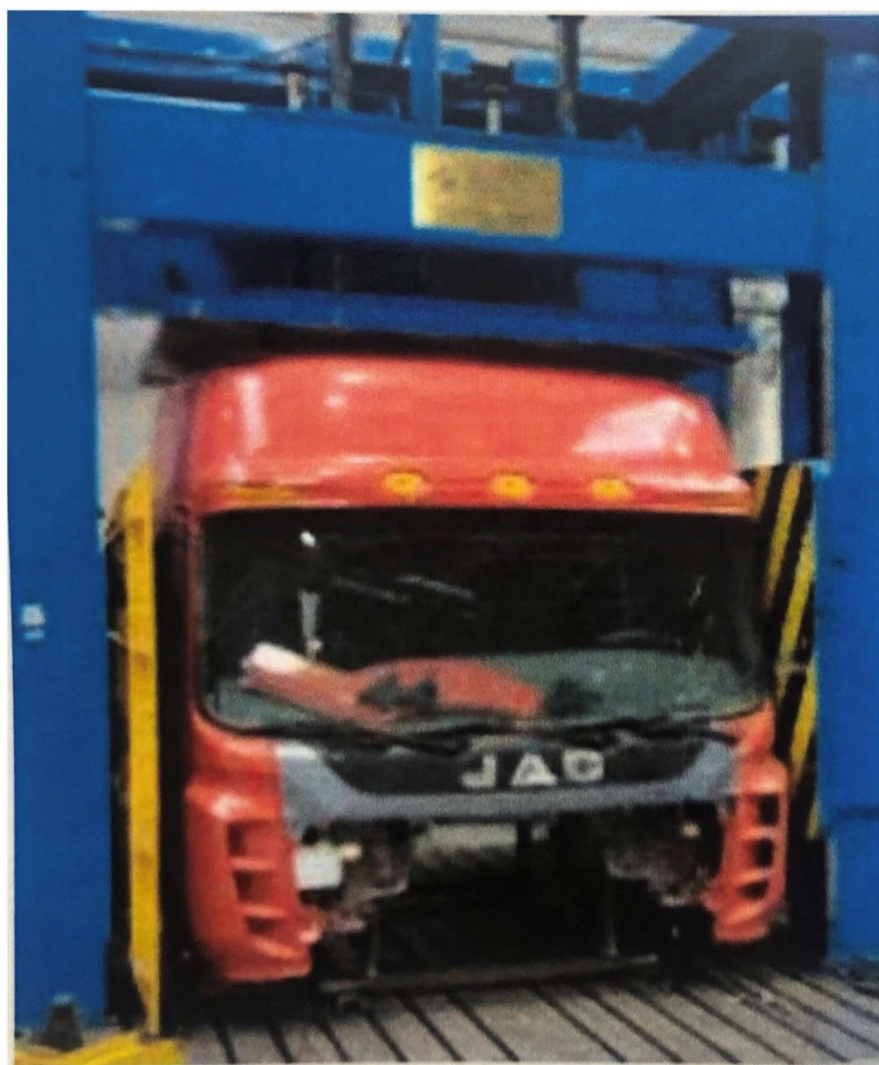
- Designed according to ECE safety standards, good safety records within the cab for the driver.
- The safety has been proved by ECE test.

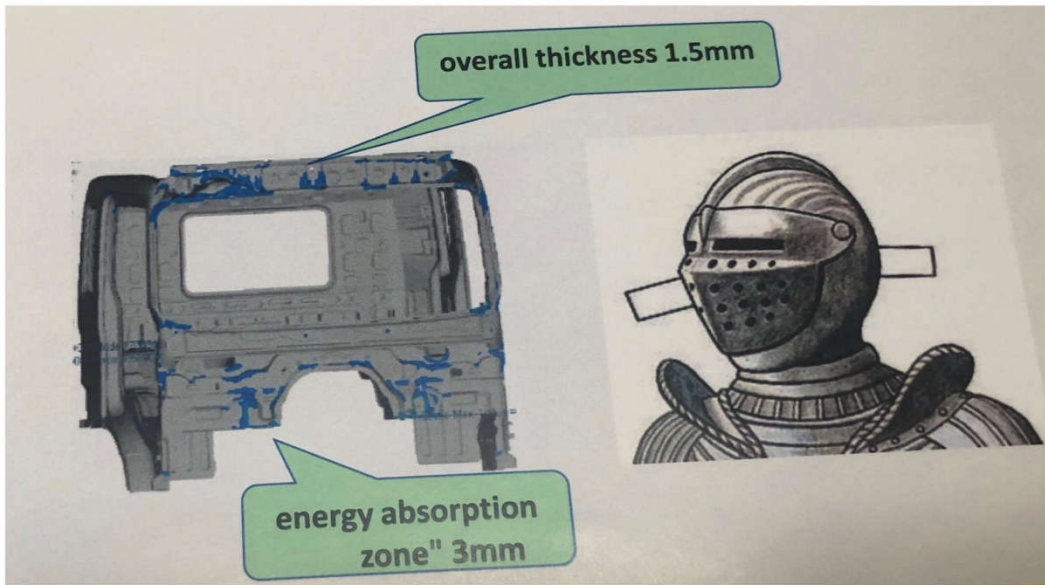


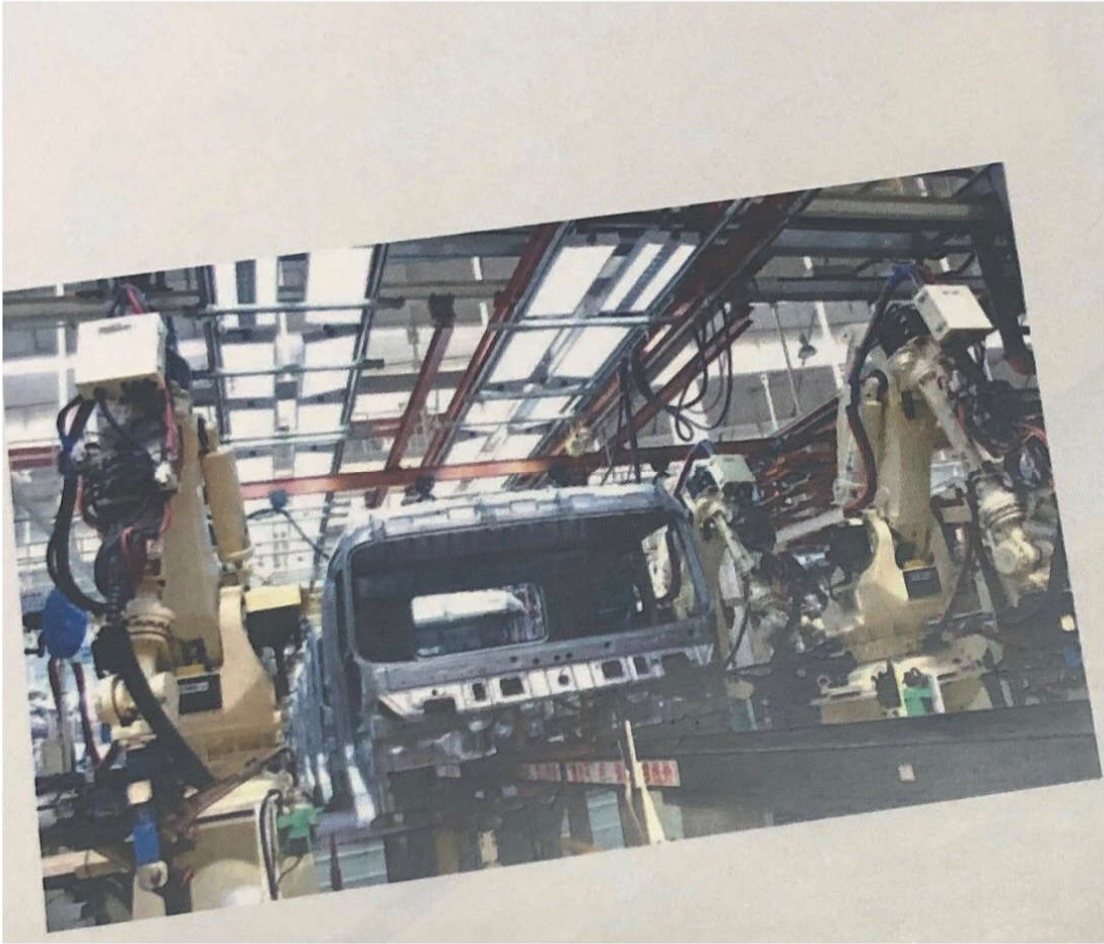












- The white body shell is designed in accordance with the ECE European safety standards, good frontal and roof collision impact testing performance;
- “energy absorption zone” feature

- With 1.5mm as the overall thickness of the cab's metal sheets; however, key impact area are reinforced with 3mm metal sheets. As strong as knight's armor.